



**UNITED WE FIGHT.  
UNITED WE WIN.  
LIVE UNITED**

## 2019 – 2020 ANNUAL REPORT

**GIVE. ADVOCATE. VOLUNTEER.  
RESPOND. RECOVER. REIMAGINE. REBUILD.**

**United Way of the  
Dutchess-Orange Region**

**[www.uwdor.org](http://www.uwdor.org)**



**United Way of the  
Dutchess-Orange Region**



## United Way Staff

**Jeannie Montano**  
*President & CEO*

**Melissa Clark, MA**  
*Director of Community Impact*

**Emily Darrow**  
*Senior Director of Marketing & Communications*

**Jane Johnson**  
*Finance Manager*

**Fausta Kolko**  
*RD Assistant (Pathstone)*

**Rebecca Lull**  
*Community Information Specialist*

**Elizabeth Manning**  
*Campaign Director*

**Sue Manning**  
*Director of Finance and Administration*

**Susan Marchewka**  
*Events Coordinator*

**Colleen McKenna**  
*SEFA Coordinator*

**Shannon Myers**  
*Financial Empowerment VISTA*

**Michelle Nepton**  
*Donor Development Manager*

**Candace Nicoletti**  
*Community Impact Coordinator*

**Christie Orr**  
*Resource Development VISTA*

**Emily Sassano**  
*Development Coordinator*

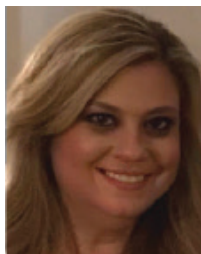
**Sharon Shah**  
*Data Entry Assistant*

**Yadira Sims**  
*Financial Empowerment VISTA*

**Annette Sullivan**  
*Executive Assistant to the President*

**Val Ubriaco**  
*Special Events Assistant*

# A Message from our President & CEO and Chair of the Board



Dear Friends,

This past year, our Fiscal Year 20, which this Annual Report reflects, was one where United Way of the Dutchess-Orange Region pivoted from business as usual to responding to a pandemic that reached a crisis in March. From March 12 to June 30, 2020, we helped 77,545 COVID-19 impacted individuals and families from our region.

How were we able to help? We did this thanks to your support. Each week we sent you an update on what we were doing and although we were unable to see you, we were in close communication. Your positive feedback helped us through some dark days. Here at our office, one of our team member's family was critically ill for several weeks. We saw the toll it took on her and her children. Our goal was to make sure that all our community members had the help they needed to remain safe, secure and with nutritious food in their homes.

We distributed PPE to nonprofits, hospitals, nursing homes and to thousands of individuals. We helped fill food pantries across both counties and supplied food to families as many of our partners pivoted from providing after school programs to offering feeding programs. It's hard to remember a time that social distancing, mask-wearing and Zoom calls were not part of our daily routine, and we know that we will continue to be cautious as we respond and recover.

From July 1, 2019 to June 30, 2020, we positively impacted 240,376 individuals in Dutchess and Orange counties. There were 19,944 calls to 2-1-1 connecting those in need with organizations to help them with food, housing, employment, and resources for COVID-19. While the pandemic forced early closure of the free tax preparation sites, more than \$5.6 million in tax refunds was generated for our counties' residents through the volunteers of AARP Foundation Tax Aide and the Hudson Valley CASH Coalition. In addition, our new Student Emergency Fund was able to help more than 100 community college students remain in school, while our Crisis Fund helped others secure employment, keep utilities on, and remain housed. In June, we introduced our "No Contact Day of Sharing" to ensure that nonprofits, schools and faith-based organizations were able to receive important necessities for their clients.

We hope later this year to see you in person, but until then we will continue to offer virtual and socially-distanced trainings, volunteer opportunities, events and workplace campaign Zoom calls. Please know that your support of United Way of the Dutchess-Orange Region truly has been a life-saver for many people this year. Thank you.

Sincerely,

  
Jeannette Montano  
President & CEO

  
Kevin Cleary  
Chair of the Board



# RESPOND.



In Dutchess and Orange Counties, **37% of households in Dutchess and 40% of households in Orange** are what United Way of the Dutchess-Orange Region considers **ALICE** (Asset Limited, Income Constrained, Employed – [www.uwdor.org/NYS-ALICE](http://www.uwdor.org/NYS-ALICE)). This means that these working households **did not earn enough income to cover the basic cost of living**, forcing individuals and families to make difficult trade-offs between necessities and essentials.

With the effect of the pandemic, these **ALICE households have been more likely to be disproportionately impacted by COVID-19.**

With less income and savings, their choices have sometimes come down to food or medicine, rent or utilities, protective equipment or essential items like diapers. Many **ALICE households** find it hard to take time off work when sick, and also to access quality health care.

We thank you for your continued support to provide these families the crucial help they need to survive – every day. Thanks to you, we are able to convene partners, providers and resources to address these needs and create a a more equitable and resilient community together.

# RECOVER.

From **March 12, to June 30, 2020** we deployed resources to help **77,545 people** in Dutchess and Orange counties impacted by the effects of COVID-19 pandemic in our community. We continue to invest in programs to support our community and provide critical help as our community suffers the longterm effects of the pandemic.



One of the thousands of families we helped during this time was Ruth's. **Ruth is one of our community members who was directly impacted by COVID-19 with the death of her daughter.** As someone who prided herself on her independence, Ruth had never asked for help from anyone. As a single mother, she worked two jobs to pay her mortgage and raise her two daughters.

With the death of her younger daughter, Angela, Ruth was devastated emotionally and asked for a leave of absence to deal with the loss, care for her other daughter and to work on her own emotional health.

Two months into her leave, Ruth realized she needed to reach out for help as she'd fallen way behind on her bills, especially with the funeral expenses for Angela. A friend told her about **United Way's 2-1-1 helpline**. Ruth called 2-1-1 and learned of a United Way of the Dutchess-Orange Region funded program that could assist her with her mortgage payment.

Ruth told us that she was able to sleep for the first time in two months after her mortgage was brought up to date and she knew that she and her daughter, Bella, could remain safely in their home.

Now back to work full-time, Ruth is once again able to keep up with her bills and put aside a small amount into a savings account. Ruth told us while she's still devastated by the loss of Angela, she is overwhelmed by the kindness and support that she's received through United Way. She hopes to be in a position to pay it forward – soon.

# REIMAGINE.

**The fight is not over. Your continued support** will help us as we continue to reimagine and rebuild our community.

We know that there are greater challenges ahead and together, with our community partners, we will be there so that calls like Ruth's are answered. **To make a gift today, go to [www.uwdor.org/donate](http://www.uwdor.org/donate).**

## REBUILD.

### CHALLENGES

### OUR RESPONSE

#### HEALTH

When children do not have access to food, they cannot learn or succeed.

Helping children and their families access nutritious food throughout the year.

#### EDUCATION

By 4th grade, in Dutchess County, 47% of students are reading at grade level, while only 34% of economically disadvantaged students are doing so. In Orange County, 40% of students are reading at grade level compared with 28% of economically disadvantaged students.

Supporting programs that strengthen children's ability to overcome barriers to education.

#### FINANCIAL STABILITY

A majority of jobs in New York State pay less than \$15 per hour, including many of our essential workers.

Providing free tax preparation with Hudson Valley CA\$H Coalition to low-income individuals, which returned nearly \$6M to the economies of Dutchess and Orange Counties in 2020.

37% (Dutchess) and 40% (Orange) of households do not earn enough income to cover the basic costs of living.

Facilitating wraparound support including access to food, shelter, transportation, and workforce training for struggling families and individuals.

**We don't do our work alone and we can't do it without you.**

## BUILDING TOURS: WE HOPE TO SEE YOU LATER THIS YEAR!

### **We can't wait to have you back in to visit!**

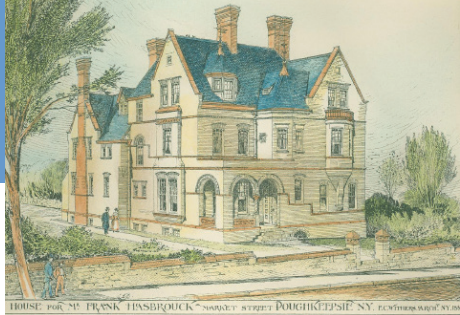
Our office in Poughkeepsie is located in a historic building on Market Street.

This unique, Romanesque style building was built in 1881 and has served many purposes over the years. During the 1940s–1950s it was a boarding house called “The Jackman Apartments.” The interior remains intact, including the massive brick chimney and fireplace, oak woodwork and glazed tiles.

We utilize the basement of our building for our Day of Sharing gift-in-kind program. Each year we distribute thousands of dollars' worth of essential items to local families in need. Recent renovations have allowed us to greatly expand the impact of this program. Due to COVID-19 we have transitioned to a “No Contact” Day of Sharing with the option for curbside pick-up to keep everyone safe.

When it is safe to resume, we will once again be facilitating tours for community members to come in and meet our staff, see how our Day of Sharing operates, tour our renovated Louis Greenspan Children's Corner, check out the historic architecture and learn about volunteer opportunities.

If you have any questions or are interested in our virtual opportunities, please feel free to call us at 845-471-1900 or email [info@uwdor.org](mailto:info@uwdor.org).



IT'S OUR MISSION TO FIGHT  
FOR THE **HEALTH, EDUCATION**  
**AND FINANCIAL STABILITY**  
OF **EVERY PERSON** IN OUR  
COMMUNITY.

# THE TRUTH ABOUT OUR COMMUNITY...

**54%**

In some areas, **high school graduation rates** are 54%

**20%**

20 out of every 100 **children in our community live in poverty\***

**47%**

Across our region, almost **1 in 2 children go to bed hungry**. In some areas, that number jumps to 83%\*\*

**40-47%**

By 4th grade, in Dutchess County, **47% of total students are reading at grade level**, while only **34% of economically disadvantaged students** are doing so. In Orange County, **40% of total students are reading at grade level** compared with **28% of economically disadvantaged students**.\*

**750**

Students in our region reported **750 incidents of bullying in their schools\***

\*Mid-Hudson Valley Community Profiles

\*\*New York State Council on Children & Families Kids' Well-being Indicators Clearinghouse



**YOUR DONATION TO THE COMMUNITY FUND HELPED MORE THAN 240,376 OF YOUR FRIENDS . . . NEIGHBORS . . . AND CO-WORKERS ACROSS DUTCHESS AND ORANGE COUNTIES.**



*Photos: Frontline Staff at Garnet Health Center receiving lunch from United Way of the Dutchess-Orange Region in April 2020. Day of Sharing in pre-COVID-19 pandemic 2020.*



# WHAT DOES COMMUNITY IMPACT MEAN?

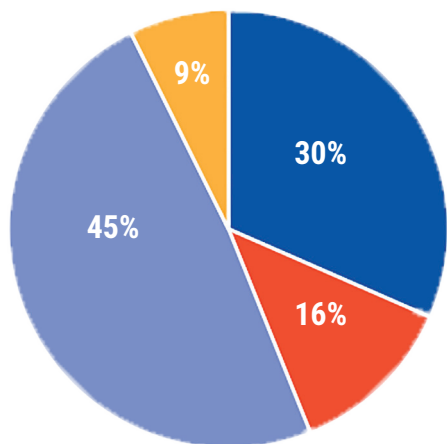
United Way fights for the Health, Education and Financial Stability of every person in our community. Every day we roll up our sleeves and ensure families are safe, housed with access to food and education.

We win when every family has an affordable place to live, when families are not worried about putting food on the table and when students have access to safe spaces to learn and thrive during and outside of school hours.

Particularly with the onset of the pandemic we have learned how ALICE (Asset Limited, Income Constrained, Employed) families are

most vulnerable and that unfortunately access to services is unequal. We are committed to keeping families safe through the pandemic, be it stocking their local food pantry, providing them essential PPE or by offering case management as they navigate our dedicated community programs.

We are working directly with service providers and families to save lives in our community during a tragic era of our collective lives. While the pandemic will pass we will continue to Live United and build our community's program infrastructure. We are here for you 24/7/365 as we RESPOND. RECOVER. REIMAGINE. REBUILD. LIVE UNITED.



**OVER  
\$2.4 MILLION  
WAS INVESTED  
IN PROGRAMS  
THAT MAKE OUR  
COMMUNITY  
STRONGER,  
THANKS TO YOU.**



**Thank you! Your donations to  
United Way of the Dutchess-Orange Region's Community Fund  
supported these programs in 2019–2020**



**FUNDED PARTNERS IN HEALTH:  
Building Resiliency**

**Goal:** Increase the resiliency of adolescents and young adults in order to reduce instances of substance abuse, bullying, violence, and other destructive behaviors.

**The Art Effect**

**DROP Studios** uses media arts as a platform to provide underserved teens with a safe space outside of school where they can build positive relationships, engage in meaningful activities, and develop healthy behaviors. Youth learn to use film and video to produce projects in teams and for community clients, developing life and job skills while earning an hourly wage or stipend.

**Big Brothers Big Sisters**

**One-to-One Mentoring** operates as an evidence-based mentoring model. Mentors are recruited to serve as role models in a structured, caring and trusting mentoring relationship that brings young people together with experienced adults. Mentoring promotes stronger relationships; increasing strategies to avoid risky behaviors and involvement in the juvenile justice system.

**Center for the Prevention of Child Abuse**

**Personal Safety Program (PSP)** is a sexual abuse prevention education program offered free of charge to elementary students (Pre K - 6th grade). PSP empowers students to speak out against abuse and focuses on safe and unsafe touches and what to do if a student were to ever receive an unsafe touch that breaks the rules. PSP offers community workshops in identifying and reporting child abuse.

**Family Services, Inc.**

**Sexual Violence Prevention Program (PS)**, leads the Regional Sexual Violence Prevention program for Dutchess, Orange & Westchester Counties, providing Mentors in Violence Prevention (MVP) and Safer Bars (SB) to promote a healthy school life/nightlife. MVP & SB are evidence-based curricula that address sexual & dating violence (SV) prevention and teach students & bar staff to identify, confront, and prevent violence.

**Family Services, Inc.**

**Teen Resource Activity Center (TRAC)** is a drop-in center in the City of Poughkeepsie serving youth ages 13-18 years from 4:00pm-9:00pm Monday to Friday. TRAC is a significant resource for at-risk youth, providing considerably longer hours of supervision than most programs, decreasing the likelihood that youth will engage in gangs, substance abuse, and other violent activity.

**Grace Smith House, Inc.**

**Healthy Teen Relationships** goes into middle school and high school classrooms, administrative, PTA, teacher meetings, and community events to educate these various groups about the signs, dangers, trajectory and coping skills for the problems of bullying, cyber bullying, and teen dating violence. Students are taught to be active bystanders and make their schools safe.

**HONORehg, Inc.**

**A Friend's House** is the only Runaway and Homeless Youth Shelter in Orange County. The program can accommodate up to 13 co-ed youth under the age of 18. Most youth staying at the shelter have been displaced from their regular place of residence or have run away. The shelter is open and staffed 24/7, 365 days a year. The goal for the end of the stay is that the youth and family are reunified.

**Hudson River Housing, Inc.**

**River Haven** addresses immediate needs of runaway and homeless youth and assists them in developing plans for their future. Services include outreach; 24-hour hotline/crisis services; emergency housing via a 12-bed shelter; individual/group/family counseling; case management; transportation; enrichment opportunities; educational support; and linkages to community services and resources.

**National Alliance on Mental Illness (NAMI) Mid-Hudson**

**Ending the Silence (ETS)** is a 50 minute, early intervention/prevention, mental health literacy presentation offered for free to high school students. Students learn about mental illness (MI) directly from families and young adults living with MI. ETS addresses substance/alcohol abuse, suicide prevention, bullying, and overcoming stigma. ETS instills good citizenship skills to help their peers.

**North East Community Council, Inc.**

**Teen Team Leadership Program** is a resilience-building, community-engagement group for low income, at-risk youth ages 14 to 18. The group coordinates its own community service activities and cultural/recreation events. It also benefits from education in social and cultural diversity, healthy relationships, and other life skills that deter harmful behaviors, chosen by our Program Director.

**Safe Homes of Orange County**

**Teen Dating Violence Prevention Program** offers knowledge and tools for youth and adults working with young people in navigating healthy and unhealthy relationships, gender violence and bullying prevention. TDVPP empowers youth to become peer leaders and raise awareness of dating violence within their community. The TDVPP operates within schools and youth organizations in Orange County.



## **FUNDED PARTNERS IN HEALTH:** **Nutrition & Physical Activity** **GOAL: Children and families will improve** **healthy eating habits and physical activity.**

### **Common Ground Farms (CGF)**

#### **Beacon Farm to School Community Project**

(BFSCP) will help food services increase scratch-made, plant-forward entrees and engage middle schoolers to participate in tastings. Food access

initiatives targeted at the most food insecure members of the school community will ensure that all students have access to fresh, nutritious food.

### **Cornell Cooperative Extension Dutchess County**

#### **Green Teen Community Gardening-Growing Healthy** (GT) is a 4-H Positive Youth

Development program of Cornell Cooperative Extension Dutchess County (CCEDC).

Through vocational work experience urban youth receive on-the job training to prepare them for college and/or employment. By expanding into Beacon High School, more youth will benefit from the health and physical activities GT offers.

### **Dutchess Outreach**

**Fresh Market** is a Mobile Farmers' Market on wheels that drives through the City of Poughkeepsie, making several stops throughout the week, affording fresh, Hudson Valley farmed produce to community members who typically lack access to these healthier, local foods. The market operates from May–November and accepts all forms of payment including SNAP/EBT, WIC FMNP, and Senior FMNP.

### **Food For Kids**

**Food For Kids** is a non-profit organization developed by the Washingtonville local community. The purpose is to address food insecurity and supply children in the Washingtonville Central School District with easy-to-prepare food for weekends and school holidays/breaks with an extension of the program during the summer months.

### **Hudson Valley Seed, Inc.**

**Beacon/Newburgh School Garden Education** By teaching elementary students in school gardens, Hudson Valley Seed (HVS) helps Beacon and Newburgh children love to eat veggies. In weekly lessons students grow, harvest, and taste vegetables and learn about health/wellness while practicing academic skills. With cafeterias HVS serves veggies-of-the-month and collaborates with teachers, parents, and community organizations to implement the programs.

### **Poughkeepsie Farm Project (PFP)**

**City FRESH** removes barriers to healthy food choices and encourages healthy eating habits and lifestyle choices among youth and families by providing access to healthy foods, especially fresh vegetables, and positive, engaging learning experiences at PFP, Poughkeepsie City School District schools, and in the community.



## FUNDED PARTNERS IN EDUCATION:

### Parent/Caregiver Support

**GOAL:** Empowering parents and caregivers to be their child's first teacher.

#### Grace Smith House, Inc.

**Parents As Caregivers** Domestic violence (DV) has a serious impact on the overall development & well-being of children. Children can experience significant negative life outcomes that extend to all life domains, including education/ employment, social & health. With support from their parents and the community, children can begin to heal resulting in increased success throughout life.



#### Safe Homes of Orange County

**Nurturing Families Program** (NFP) services adults and their children residing in the agency's 17- bed emergency shelter for victims of domestic violence. The NFP is designed to support families in shelter coping with the impact of the abuse they experienced while encouraging the positive development of family relationships and functioning through nurturing interactions and education.

## FUNDED PARTNERS IN EDUCATION:

### A Community Effort to Learning

**GOAL:** Provide opportunities for structured learning outside of the classroom for students in Kindergarten through 3rd grade.

#### Boys and Girls Club of Newburgh

**The Afterschool Project's Early Elementary Education Program** is designed to provide students in grades K- 3 with the academic and social skills they need to successfully enter college and the workforce. These activities include homework help and tutoring, academic instruction, and engaging science, technology, arts and recreational electives.

#### Culture Connect

**Life Learning and Language (LLL) Program** is an after-school and summer enrichment program for students who are English as a New Language (ENL) learners in grades K-5 who live in the Rhinebeck and Red Hook Central School Districts. LLL is a program of CultureConnect, in partnership with Rhinebeck Central School District, Red Hook Central Schools and Bard College.

#### Literacy Connections of the Hudson Valley

**Book Buddies** uses volunteers to read one-on-one with children in K-4th grade who are identified by their teachers as reading below grade level. Schools are recruited to participate and volunteers are trained and matched with a student. Classroom Book Buddies volunteers read aloud to children, using a dialogic reading method to give them a positive experience with books.

#### Newburgh Armory Unity Center

**Comprehensive Kindergarten through Career Program** prepares grade K-12 participants with the skills needed for high-demand careers. While being engaged in NAUC classes, students are also able to hone their literacy, communications, math and

problem-solving skills through their exposure to the educational experiences, while also benefiting from weekly contact with leading businesses and community leaders.

### **Vassar College Urban Education Initiative**

**Vassar English Language Learners Outreach Program (VELLOP) Early Literacy** works closely with Poughkeepsie teachers to ensure that between 50-100% of ELLs at three schools in the PCSD receive one-on-one tutoring for approximately 3 hours/week. VELLOP has also developed a family literacy approach and programming to facilitate the transfer of early literacy skills across languages.



## **FUNDED PARTNERS IN FINANCIAL STABILITY:**

### **Long Term Capacity Building**

**GOAL: Improve access to resources to overcome short-term crisis.**

**Catholic Charities Community Services of Dutchess County Financial Stability Strategy** provides holistic crisis intervention and case management services to singles and families, regardless of religion, race, ethnicity or gender. Services are individualized, both by service plan

and duration. The program looks beyond the presenting crisis to ensure financial, health, physical and emotional needs are not only met but are sustainable.

### **Catholic Charities of Orange, Sullivan & Ulster**

**Case Management & Crisis Intervention** provides services to individuals or families in Orange County who are in crisis as a result of financial emergency. This could be related to evictions, homelessness, medical needs, transportation, or situations that may impact their wellbeing.

### **Community Action Partnership for Dutchess County**

**Crisis Intervention & Case Management Programs** help low income families in our community who struggle to meet their basic needs; shelter, utilities and food, living paycheck to paycheck. When faced by an unexpected crisis, the family must choose between meeting the crisis and putting food on the table. The Crisis Intervention & Case Management programs will help the family meet the immediate crisis and develop skills to avoid future crises.

### **Cornerstone Family Healthcare**

**Healthy Connections**, first established in 2013, serves homeless individuals and/or those experiencing housing instability within Orange County. Its goals are to improve access to medications and non-emergency medical transportation while bringing local services into contact with patients. Ultimately this aims to break the homelessness cycle.

### **Dutchess Outreach, Inc.**

**Emergency Assistance & Relief Program** works with clients to ensure that their electricity stays on and that they can afford the medicine they're prescribed by issuing small, one-time grants after they undergo a case management intake process.

### **Grace Smith House, Inc.**

**Meets Basic Needs** is a program designed to help victims of domestic violence stabilize their lives by providing direct financial assistance to alleviate an immediate financial crisis and provide supports and services needed to empower victims of domestic violence and their children to move towards building a foundation of financial stability and independence.

### **Hudson River Housing**

**Housing Navigation Program** provides assistance to homeless, at-risk, and low-income households in securing appropriate housing.

### **Jewish Family Services**

**Financial Empowerment Program**, a program of over 25 years, provides emergency funds and offers resources to those in financial distress.

### **Regional Food Bank of the Hudson Valley**

**Food for Dutchess & Orange County Feeding Program** provides low-income Dutchess and Orange County residents with nutritious food when they seek food assistance from area food pantries, soup kitchens, or shelters. The grant funds lines of credit at the Food Bank which agencies use to secure food at no cost to their limited budgets. This grant expands their capacity and enables them to feed more people.

### **Safe Homes of Orange County**

**Financial Assistance Program (FAP)** supports access to emergency financial assistance for the crisis intervention needs of victims of domestic violence engaged in services with Safe Homes. The program is intended to increase victims' access to safety and sustainability by minimizing the harmful impact of ongoing domestic violence victimization and abuse, including financial/economic abuse.

### **United Way of the Dutchess-Orange Region**

**Crisis Fund** was established to reduce situations in which families may find themselves in economic crisis. Families may request up to \$250 one time (no more than once per year) to overcome a barrier related to financial stability. Potential financial barriers may include lack of resources related to rent/mortgage, transportation (car repair, public transit pass), medical prescription, or utility shutoff.

## **FUNDED PARTNERS IN FINANCIAL STABILITY:**

### **Strength Based Financial Education**

**GOAL:** Improve the financial position of individuals and families across our region.

### **Community Action Partnership for Dutchess County**

**Dress for Success Dutchess County (DFS)** empowers women to achieve economic independence by providing a network of support, professional attire and the development tools to help women thrive in work and in life. All the DFS programs furnish the client with a confidence that she carries forever and the knowledge that she can actively define her life, the direction she takes and what success means to her.

### **Exodus Transitional Community.**

**Newburgh Community Re-Entry Program** works with individuals coming home from prison/jail. Participants go through an employment readiness/financial stability workshop that teaches them financial literacy, soft skills, and helps them prepare to enter the workforce. They are assigned an Employment Specialist, and Case Manager. Hot meals, transportation, incentives, and CBT groups are provided.

### **Hudson River Housing, Inc.**

**Follow Through Program (FT)** aims to increase the long-term stability and self-sufficiency of formerly homeless households by providing services during and after their transition from temporary shelter to permanent housing in the community. Support is provided for up to a year as the household works towards increasing financial security, sustaining housing, and other self-sufficiency goals.

### **Legal Services of the Hudson Valley**

**LSHV Homelessness Prevention and Income Stabilization Services** prevents homelessness for children and families; helps families to retain protected subsidized housing; provides emergency cash assistance and casework support to clients facing eviction; prevents foreclosures/obtains mortgage loan modifications; helps clients to stabilize/increase their incomes by obtaining/maintaining public benefits; makes referrals.

### **Pawling Resource Center**

**Transportation Program** provides transportation services for the home bound elderly and/or vulnerable population, which includes rides to medical appointments and to access food. The PRC also provides transportation service for delivery of food from PRC Pantry to homebound clients, and pick-up of donated food from partner organizations.



## **FUNDED PARTNERS IN FINANCIAL STABILITY:**

### **Increasing Assets**

**GOAL: Increasing annual earnings and workplace advancement of individuals and families in our region.**

### **Hudson Valley CA\$H Coalition**

#### **Annual Free Income Tax Preparation Assistance**

**Program** With funding from United Way of the Dutchess-

Orange Region, the AARP Tax-Aide Foundation, Community Action Partnership for Dutchess County, and from other organizations, and with a very significant amount of in-kind support and volunteer hours, the Hudson Valley CA\$H Coalition and AARP Tax-Aide organization provided tax preparation support to nearly 7800 low-to-middle income clients and their families in the 2017-2018 tax filing season. The 36 tax sites provide coverage across all areas of Dutchess and Orange counties.



## FUNDED PARTNERS IN FINANCIAL STABILITY PROVIDING KEY COMMUNITY RESOURCES:

### **Hudson Valley 2-1-1 Helpline**

A free, confidential, multilingual service to assist the public in finding the answers to a variety of Health and Human Services related questions. This resource is available 365 days a year, 24 hours a day.



### **Mid-Hudson Valley Community Profiles**

Is an indicator project and resource that assesses our Mid-Hudson Valley region to quantify strengths and challenges, and help determine priorities and launch community-wide discussions about improving quality of life.

## FUNDED PARTNERS HELPING VETERANS:

### **Housing Assistance**

**GOAL:** Staff and volunteers help veterans and their families access affordable and safe housing that meets their needs.

#### **Hudson River Housing**

**Veteran Impact Program (VIP)** provides housing assistance to address the needs of low-income veterans who are homeless or are at imminent risk of becoming homeless. Services are meant to ensure that veterans are stably housed as quickly as possible: these include outreach, housing location/counseling, assistance with initial housing costs, and service linkages to help them sustain housing.



### **Legal Assistance**

**GOAL:** Case coordinators/volunteers help veterans and their families access legal services.

#### **Legal Services of the Hudson Valley (LSHV)**

**Veterans & Military Families Services for Dutchess and Orange** serves veterans/members of the military struggling to transition to civilian life while facing a range of issues including eviction/foreclosure; denial of rights/benefits; domestic violence; unscrupulous practices of predatory lenders/debt collectors; illnesses/disabilities, e.g., TBI/PTSD. LSHV provides civil legal services & referrals to a network of providers dedicated to meeting veterans' distinct needs.

# PARTNERS IN COMMUNITY

## WHO RECEIVED HELP WITH EVERYDAY NEEDS DURING 2019-2020

- GIFT-IN-KIND PROGRAM THROUGH OUR DAYS OF SHARING
- VOLUNTEER SUPPORT THROUGH OUR VOLUNTEER PORTAL ([volunteer.uwdor.org](http://volunteer.uwdor.org)) AND DAYS OF CARING
- HOLIDAY HELPING HAND WITH THE POUGHKEEPSIE JOURNAL
- NONPROFIT PROFESSIONAL DEVELOPMENT TRAINING

12th Rock  
3-21-OCNY  
99th Regional Division  
Abilities First  
Access Supports for Living  
ACE Mentor Program of the  
Hudson Valley  
Action Toward Independence, Inc.  
Adelphi University  
Adoptive and Foster Family  
Coalition  
Alzheimer's Association  
American Red Cross  
Arlington BID  
Arlington Central School  
District  
Astor Services for Children &  
Families  
Beacon High School  
Birthright Dutchess County  
Black History Project  
Boateng Creatives LLC  
Bon Secours Charity Health  
System  
BRIDGES  
C.O.L.O.R.S. Foundation  
Carmel Communities That Care  
Coalition  
Catskill Hudson Area Health  
Education Center  
The Center for Recovery  
The Center for the Prevention  
of Child Abuse  
Center of Compassion  
Central Hudson Gas and  
Electric Corp.  
Chester Public Library  
Child Care Council of Orange  
County, Inc.  
Children's Home of  
Poughkeepsie  
Christ Episcopal Church,  
Warwick NY  
The City of Beacon Housing  
Authority  
Comfort Children Ministry Int'l  
Community League Chapter  
CoveCare Center  
Dutchess Community College  
Dutchess Community College  
Foundation

Dutchess County Regional  
Chamber of Commerce  
Easter Seals Food Pantry  
Ebenezer Baptist Church  
Eileen Hickey Holiday Dinner  
Esperanza Dutchess County  
Hispanic Organization, Inc.  
Florida Union Free School  
District  
Food Bank of the Hudson  
Valley  
Foster Blessings  
Fostering Hope Together  
Fresh Start Café  
Genesis Academy  
Grace Episcopal Church/EPIC  
Health Education Association  
Healthy Families New York, Inc.  
HONOR  
Hudson River Healthcare, Inc.  
Hudson Valley Community  
Center  
Hudson Valley Community  
Services  
Hudson Valley House of Hope  
Hyde Park Central School  
District  
I Am Beacon  
Iglesia El Buen Pastor:  
Episcopal Church Newburgh  
Independent Living Inc.  
Jewish Federation Dutchess  
County  
John Flowers Community  
Kiwanis Club of Chester  
Liberty Partnership Program  
Locust Grove  
Maternal and Infant  
Community  
Health Collaborative  
Mental Health America  
Dutchess County  
Mid-Hudson Addiction  
Recovery Center  
Mother's Cupboard Food  
Pantry, Beulah Baptist Church  
Mount Saint Mary College  
New Vision Church  
Newburgh Enlarged City  
School District  
Newburgh SDA Church

Open Arms Inc.  
Orange County Social Services  
Orange County Youth Advocate  
Programs, Inc.  
Orange-Ulster BOCES  
Pathstone Corporation, Inc.  
Pine Bush Central School  
District  
Poughkeepsie Branch AAUW  
Poughkeepsie Central School  
District  
Project L.I.F.E.  
Rebuilding Together Dutchess  
County  
Red Hook Community Center  
Regional Economic Community  
Action Program Inc.  
Rhinebeck Central School  
District  
Salvation Army Poughkeepsie  
Spackenkill Union Free School  
District  
Society of St. Vincent de Paul  
St. Catherine's Center for  
Children  
St. Joseph's Treatment &  
Recovery Centers  
St. Paul's Poughkeepsie Food  
Pantry  
SUNY Orange  
Taconic Resources for  
Independence, Inc.  
The Osborne Association  
Trinity Temple Seventh Day  
Adventist Food Pantry  
Valley Central School District  
Wappingers Central School  
District  
Warwick Valley Community  
Center  
Wassaic Ladies Auxiliary  
Association  
We Are Newburgh  
Westcop SSVF  
Youth Mission Outreach, Inc.  
Youth One Stop / The Chamber  
Foundation



## MEET MARIA

On May 8, during the COVID crisis, Maria, a 40-year-old who is raising Betty, her 11-year-old daughter, alone after her divorce, called United Way's 24/7/365 confidential helpline. Maria needed help to move to a new apartment as she had to change school districts immediately. Betty was being badly bullied in her school and had been hospitalized twice that

year for anxiety, depression and PTSD.

Alicia, the 2-1-1 call specialist, was able to provide Maria with a source of United Way funded support to help her move into a two-bedroom apartment in a new school district and also provided mental health access opportunities for Maria, who was also undergoing trauma with this crisis.

Thanks to your support of United Way of the Dutchess-Orange Region, Maria and Betty are doing well now. Betty is happy with her new school and is making friends in the virtual classes, and Maria is up-to-date on the rent and putting some savings aside.

*To see more reasons why we give and meet other families, go to*  
**[www.uwdor.org/success-stories](http://www.uwdor.org/success-stories).**

## MEET JASON

A year before the pandemic, Jason became ill and lost his job. He'd used his savings to pay the medical bills and his unemployment benefits weren't enough to keep up with his house, car, utility and insurance payments – so he lost his car. Growing up, his family stressed self-reliance and he'd never asked for help before this, but the situation was so critical in August 2019, he called United Way's 2-1-1 helpline. Gina, the 2-1-1 Call Specialist, referred Jason to us.



Jason told us he'd been lucky enough to be offered a full time job in Manhattan, but without his car he had no way to get there without the money from his first paycheck.

United Way of the Dutchess-Orange Region's Crisis Fund and our funded partner were able to fund two one-week passes for travel to Manhattan on Metro North. After his two-week orientation that August, Jason received his first paycheck and was able to pay for his own transportation. Six months later, last January, he'd received a promotion and raise and was able to purchase a used car.

When the pandemic hit, Jason was able to work from home keeping in touch with his clients virtually. This steady income let him fix up his house and create apartments that he now sublets to three tenants. Jason is also volunteering once a week to help other people that are facing crisis due to COVID-19 and is so thankful for receiving that help that's changed his life.

*To see more reasons why we give and meet other families, go to [www.uwdor.org/success-stories](http://www.uwdor.org/success-stories).*





## MEET DEBORAH

The loss of Deborah's husband shattered her world. As someone who had served her country for more than 20 years, she never anticipated her world would be shaken in peacetime during what was a quiet March. But by April, Deborah realized that after the cost of the funeral, her savings account was depleted and her salary alone wouldn't be enough for her to pay the rent that was overdue from when her husband fell ill.

With help catching up on the rent and assistance in getting military benefits, Deborah is much more financially stable. With the gift of the store card for medication purchases, provided through United Way and a CVS Health grant, she's been able to purchase three months of blood pressure medication she had been taking every other day to "stretch it out" because of the cost.

Deborah and her granddaughter want to say thanks for not forgetting this veteran. They appreciate all those who have donated to provide help to those like her impacted by COVID-19 in our community. She will be continuing to teach her granddaughter the importance of service exemplified not just by military members, but all those on the frontline of the war against COVID-19 and other crises in our community.

*To see more reasons why we give and meet other families, go to*  
**[www.uwdor.org/success-stories](http://www.uwdor.org/success-stories).**



## MEET THERESA

Theresa and her two children had no choice but to leave a violent situation at home in the midst of the COVID-19 pandemic and seek help at an emergency shelter.

The family arrived with nothing but the clothes on their backs—and the shelter was able to provide them with just basic essential items.

At the shelter, Theresa worked with advocates for safety planning, exploring her options, so she could keep her job and save for their future. She worked with the shelter's staff to find an affordable and safe housing option.

Within a month of entering the shelter, Theresa found an apartment she could afford and had saved up for the first month's rent. Thanks to you, the family was able to get partial assistance with the security deposit through the United Way Crisis Fund, as well as a gift card so they could shop for needed household items.

Theresa and her children will continue to have support through the program to ensure they have a safe and independent life together — now and in the future.

*To see more reasons why we give and meet other families, go to [www.uwdor.org/success-stories](http://www.uwdor.org/success-stories).*



## VOLUNTEER OPPORTUNITIES

Year-round, United Way of the Dutchess-Orange Region seeks enthusiastic and motivated volunteers who would like to give back to their community. United Way partners with local nonprofits to complete service projects for their organization through our Days of Caring program. These opportunities are held throughout the year on National Days of Service such as MLK Day of Service or National Volunteer Week. Volunteers find virtual and socially-distanced opportunities such as sorting food donations, painting classrooms, writing cards for home-bound seniors, or delivering a meal to local community members.

United Way also seeks individuals to join our special events committees, as well as our Young Leaders United affinity group, a dynamic group of 18–40 year olds looking to make a difference in their community, while positively representing United Way. Being a Loaned Executive is also a great way to volunteer while networking and learning new skills. We also seek volunteer Grant Reviewers each spring, to review online community grant applications submitted for United Way funding.

In addition, volunteers are often needed to assist in restocking our Louis Greenspan Children's Corner, as part of our Days of Sharing program.

More information can be obtained from Melissa Clark at 845-471-1900 x3128, [mclark@uwdor.org](mailto:mclark@uwdor.org). Please visit our volunteer portal at [volunteer.uwdor.org](http://volunteer.uwdor.org) for ongoing opportunities in our community.



Photos : Volunteer projects pre- and post COVID-19 pandemic at the Poughkeepsie Farm Project, special dinner for veterans in September 2019 and delivery of hygiene kits/care packages in June 2020.

# WORKPLACE CAMPAIGNS 2019-2020

IT'S THANKS TO THE GENEROUS SUPPORT OF ORGANIZATIONS IN OUR COMMUNITY THAT WE ARE ABLE TO DO MUCH OF THE WORK WE DO. THANK YOU.  
\*Corporate Gift

## \$100,000+

Central Hudson Gas & Electric Corp.\*  
IBM

## \$50,000-\$99,999

C&S Wholesale Grocers\*  
RBT CPAs, LLP\*  
UPS\*

## \$25,000-\$49,999

Adams Fairacre Farms\*  
Hannaford Supermarkets\*  
Hudson Valley Credit Union\*  
Orange Bank & Trust Company\*  
Orange & Rockland Utilities\*

## \$10,000-\$24,999

The Children's Home of Poughkeepsie  
Dutchess County Government  
Enterprise\*  
James L. Taylor Manufacturing  
Company\*  
Marshall and Sterling Inc.\*  
Orange County Government  
Package Pavement Company Inc.\*  
Rhinebeck Central School District  
Wappingers Central School District

## \$5,000-\$9,999

Arlington Central School District  
Cary Institute of Ecosystem Studies  
Do It Best Corp\*  
EFCO Products Inc.\*  
FedEx Corp  
Garnet Health Medical Center\*  
Illinois Tool Works\*  
Key Bank\*  
Kiewit Infrastructure Company\*  
Metal Container Corp\*  
M&T Bank\*

Newburgh Enlarged City School  
District  
Orange Ulster BOCES  
Pine Bush Central School District  
Precision Pipeline Solutions  
Price Chopper  
Rhinebeck Bank\*  
Spackenkill Union Free School District  
Target  
United Way of the Dutchess-Orange  
Region

## Up to \$4,999

AllState Insurance  
Amazon Smile  
American Express  
Anthem  
The ARC Sullivan-Orange Counties  
New York  
AT&T  
Ball Corp  
Bank of America and Merrill Lynch\*  
Bank of Millbrook  
Berkshire Bank  
Best Buy Corp  
Big Brothers Big Sisters of Orange  
County  
BNY Mellon Community Partnership  
Bon Secours Health System  
Carpenter & Smith  
The Chazen Companies\*  
Chester Union Free School District  
Community Action Partnership for  
Dutchess County  
Con Edison  
Corbally, Gartland and Rappleyea, LLP\*  
Crystal Run Village Inc.  
Dutchess County Regional Chamber of  
Commerce  
Dutchess Community College\*  
Dutchess County BOCES  
Dutchess Day School  
Dutchess Outreach

Dutchess Tourism Inc.  
Emery and Webb Inc.  
Enlarged City School District of  
Middletown  
Ethan Allen Workforce Solutions  
Family Services Inc.  
Fearless! Hudson Valley Inc.  
Frontier Communications  
Gannett Fleming  
Geico  
Genetronics  
Global Foundries  
Goshen School District  
Grace Smith House  
Hickey Finn and Company Insurance\*  
High Hotels  
HONORehg Inc.  
Hudson Heritage Federal Credit Union  
Independent Telecommunications  
Corporation  
JCPenney  
Jewish Family Service of Orange  
County  
Johnson Controls Inc.\*  
JP Morgan Chase  
Kal Pac Corporation  
Kirshon and Company PC  
Kiryas Joel School District  
Lakeland Bank  
Legal Services of the Hudson Valley  
Liberty Mutual Insurance  
Liscum McCormack VanVoorhis LLP  
Literacy Connections of the Hudson  
Valley  
LSI Lighting Solutions  
Macy's, Inc.  
Manpower  
Masci and Hale Family Dentistry  
McCabe and Mack LLP  
Mental Health America of Dutchess  
County  
Mid-Hudson Library System  
Mid-Hudson Valley Federal Credit  
Union  
Mid-Hudson Works  
Millbrook Central School District  
Monro Muffler  
MVP Health Care  
Nationwide Corp  
New York Life Insurance Company

Orange County AHRC  
Orange County Partnership  
Parkhurst Dining  
Pawling Corp  
Paychex Inc.  
People's United Bank\*  
Pepsico  
Pine Plains Central School District  
Port Jervis City School District  
Poughkeepsie Journal Media  
Poughkeepsie Public Library District  
Prager Metis CPAs\*  
Pratt & Whitney Advanced Coating  
Technologies\*  
PRIME Wealth Management  
Principal Financial Group  
Raymond James Financial Services\*  
Riverside Bank  
Rose & Kiernan, Inc\*  
Safelite Autoglass  
ShopRite Wakefern Corporate  
Headquarters  
SP Richards Company\*  
State Farm  
Stop and Shop\*  
SunTrust Bank  
SUNY Orange  
The Art Effect  
TD Bank  
TEG Federal Credit Union\*  
Think Dutchess Alliance for Business  
Thrivent Financial  
Tompkins Mahopac Bank  
Tops Markets\*  
Torrcoco  
Town of Chester  
Town of Hyde Park  
Ulster Savings Bank\*  
United Health Group  
USAA  
Valley Central School District  
Verizon  
Walmart  
Washingtonville Central School District  
Wells Fargo  
WellTower  
Westage Corp



# WORKPLACE CAMPAIGN CORPORATE GIFTS

## **\$100,000+**

Central Hudson Gas & Electric Corp.

## **\$20,000-\$99,999**

C&S Wholesale Grocers

Orange & Rockland Utilities

UPS

## **\$10,000-\$19,999**

Hannaford Supermarkets

## **\$5,000-\$9,999**

Garnet Health Medical Center

Hudson Valley Credit Union

James L. Taylor Manufacturing Company

M&T Bank

## **Up to \$4,999**

Adams Fairacre Farms

Corbally, Gartland and Rappleyea, LLP

Do It Best

EFCO Products Inc.

Enterprise

Hickey Finn and Company Insurance

Illinois Tool Works

Key Bank

Kiewit Infrastructure Company

Marshall and Sterling Inc.

Metal Container Corp.

Orange Bank & Trust Company

Package Pavement Company Inc.

People's United Bank

Prager Metis CPAs

Pratt & Whitney Advanced Coating Technologies

Raymond James Financial Services

RBT CPAs, LLP

Rhinebeck Bank

Rose & Kiernan, Inc

Stop and Shop

TEG Federal Credit Union

Tops Markets

Ulster Savings Bank



## Tocqueville Society Members

### \$10,000+

Kevin Cleary  
William and Candy Davies  
Peter Groffman and Katherine Bishop  
Steven and Linda Lant  
Linda Sanford  
1 anonymous donor

United Way of the Dutchess-Orange Region's Alexis de Tocqueville Society was formed in March of 1984 to deepen individual understanding of, commitment to, and support of United Way of the Dutchess-Orange Region's work: advancing the common good by creating opportunities for a better life for all. Membership in the Tocqueville Society is granted to individuals or partners who contribute at least \$10,000.00 annually to United Way of the Dutchess-Orange Region.

## Leadership Society

### \$5,000 - \$9,999

Michael Burdis  
Steve and Susan Howell  
Anne Lescher  
John P. O'Shea

Robert Sawicki  
Michael Scott  
2 anonymous donors

### \$3,000 - \$4,999

Christopher Capone  
Rocco Cocco and Sharon Weed-Cocco  
Tim and Alicia Dean  
Arthur DeDominicis, CPA  
Paul Haering  
Walter and Susan Joseph  
David Langella  
Dr. Robert McKee  
Todd and Janette Ritter

### \$2,000 - \$2,999

John Borchert  
Alice Broner  
Lawrence Byrne  
Anthony Campagiorni, Esq.  
Frank and Tracey Doherty  
Darren Doherty  
Timothy Eisentraut  
Charles Freni Jr.  
John and Harriet Furey  
Jon Garlett  
Michael Gilfeather  
Maureen Halahan

# DONOR LEADERSHIP SOCIETY

**THANK YOU** to the many donors who support our community. For those who can give more, Leadership Giving is a way to be a role model for others. United Way of the Dutchess-Orange Region's Leadership Society members demonstrate the belief that the health and welfare of residents in your local community are worthy of a significant personal investment. Our Leadership Society was created to promote and recognize these donors. For additional information, contact Michelle Nepton at 845-471-1900 ext 3115.

Kevin Hughes  
James and Chrissy King  
Eric Loeven  
Gregory and Mary Mayotte  
Sharon McGinnis  
Jeannie Montano  
Steward T. A. Pickett  
Bradley Quick  
Dale Riedy  
Robert Terry, CLU, ChFC  
Raymond Watroba Jr.  
2 anonymous donors

### **\$1,000 - \$1,999**

Dominic Alioto  
Annette Bailey  
Amy J. Berger  
Kyro Bouquet  
Ronald Brand  
Keith Brokaw  
Christopher Broner  
Thomas Burns  
Brian Cannon  
Robert Caso  
Richard Chazen  
Heather Cimorelli  
Victor Civitillo  
David Cole  
John and Ingrid Collins  
Kyle Cost  
Sharon Count  
Vito Cracchiolo  
David and Mary Crenshaw  
Emily Darrow  
Edwin Davenport  
Robert and Heather Dellaero  
Phil Derasmo  
Davide DiGenova  
Tom and Regina DiGiovanni  
Roger Dodge  
Mr. & Mrs. William D. Dunstan  
Jacqueline A. Emslie, MS  
Michael Englishby  
Mr. & Mrs. David W. Frederick

Dr. Melissa Gaeke  
Joseph Garozzo  
Jennifer and Shawn George  
Janet Giannetta  
James Gorman  
Michael and Clare Graham  
Linda Hannigan  
Nagesh Hanubal  
Rebecca Hasbrouck  
Timothy Hayes  
Malinda Haynes  
Michael Hichak  
Daniel Hickey  
David Horton  
Jeffrey Hotaling  
Margaret Howe  
Stephanie Ingold  
Rachel Johnson  
Mark and Debbie Kastner  
Julie Krieger  
Scott and Stacey Langenthal  
Pat LaRock  
Phillip Lekanides  
Carson Lyons  
Patricia and Dean Lysenko  
Tim O. Mains and David P. Gardner  
Gaye E. Mallet  
Elizabeth Manning  
Robert R Marchione  
Dr. Peter Masci and Christine Masci  
Suzette Mazurowski  
James McCardle III  
Scott McDowell  
Bruce Miller Jr.  
Ann Marie Moore  
Christina Myers  
John G. Nardi  
John O'Keeffe  
Peter Olson  
Michelle O'Reilly, CPA  
Barbara and John Ostrander  
Mr. and Mrs. Albert Passaro  
Cassi Paupst

Robert Peacock  
Shari Plass  
Travis Podolec  
Jill Posephney  
Robert Quickle  
Ita Rahilly and Louis Fish  
Gary Ricci  
Deke and Debbie Rothacker  
Edward Sammis  
Wendy Santiago  
Anne Saylor and Skip Weisman  
Hans Schick  
Mr. Andrew Seward  
Kevin Sheehan  
Philip and Frances Shepherd  
Charles Stazo  
Scott Sweeney  
Michael Swensen  
Frank Torres  
Richard Turi  
Michael and Kelly Turturro  
Russell Urban-Mead  
Mark and Liz Villanti  
Mary Kay Vrba  
Thomas and Michele Weddell  
Dr. Ann Weeks  
Edward Wilson  
John and Elizabeth Xanthis  
Michael Yegidis, CPA  
8 anonymous donors

## 500CLUB MEMBERS

Dane Adams  
Matthew Aguiar  
Carrie Albertson  
Marc Alston  
Sarah Anderson  
Anne Atherton  
John Bartolotta  
Lorraine Barton  
Frank Bellacicco  
Louis Biskup  
Taryn Black  
Daniel Boccard  
Rodney Bolden  
Jennifer C. Boniface  
James Booth  
Jolene Borell  
Steven Borsch III  
Tanya Bramble  
William Brannen, Sr.  
Tim and Kim Breault  
Edward and Gunta Broderick  
Vincent Brown  
Franco Bruna  
Sandra Bruno  
Andrew Bruzzese  
Gordon Burdis  
Thomas Burnell  
Laura Burns  
Lawrence Cambalik  
Patrick Cardella  
Anita Carfora  
Ting Chan  
John Chrysler  
Melissa Clark  
Evan Coe  
Paul Colbert  
John Collins  
Ramon and Lennie Kay Colon  
Nicholas Contelmo  
Richard Conway  
Emily Cook  
Jonathan Correa  
Michael Coulter  
Michelle Demild

David Dittman  
Paul Doherty  
Dawn Dorien  
Timothy Dowd  
Brian and Evelyn Doyle  
Donald Dubois Jr  
Ellen Dumbleton  
Robert Dunderdale  
Karin Eckman  
Nicole Edick  
Jack Effron  
Steven and Amy Effron  
Dr. and Mrs. Walter Engel Jr.  
Michael Fasolino  
John Ferguson  
Mrs. Kathryn Fisher  
Peter Fitzpatrick  
Kenneth Folster  
Candice Garcea  
Kendra Garzione  
James Gauthier  
The Geary Family  
Glenn Gibson  
Christopher Gilbert  
Steven Gillett  
Nicole Gilmartin  
Clarissa Goins  
John and Gloria Golden  
Stephen Grabarits  
Jerome Graham  
Christopher Gregory  
Joseph Hally  
Pano Harpolis  
Christopher Hayes  
Kwane Hayle  
Denise Hector  
Eleanor Hedin  
Steven and Beth Herschbein  
Zachary Hoffert  
Kevin Hoffman  
Erik Hofmann  
Ruth and Mike Holt  
Bridget Howley  
Garry Hughes  
Yamone Hurley  
Jason Imperiale

Jane Johnson  
Elizabeth Jones  
Anthony Kalkandis  
Julia Kammerer  
Sandy and Ed Kane  
Davina Keeno  
Sandra Kirby  
Gerald Klein, Jr.  
Joseph Koberger  
Lawrence Korducki  
June Kreisberg  
Ladyowl  
Ty Lavigne  
Margaret Lawson  
Freya Lee  
Edwin Deane and Judith Leonard  
Lauren Leone  
Teresa Leske  
James Letterio Jr., CPA  
Michael Levensohn  
Julia and Ron Linton  
Eileen Lomoriello  
Barbara Louthan  
Gary Lovett and Janet Allison  
Jeanneene Ludemann  
James MacFarlane  
Patrick Mahony  
Christopher Maloy  
Janet Manfredi  
Susan Manning  
Glenn Marchi  
John Maserjian  
Megan and Brian McKann  
Brian McNamara  
Thomas McNutt  
Robert and Althea Meade  
Mrs. Ann Merenda  
Alana Mikhalevsky  
Robin Moore  
Frederick Morina Jr.  
James and Roberta Mulder  
Jonathan Mullin  
Mark Mulpeter  
Jana Murray  
James Murray  
Michelle Nepton



Richard O'Keefe  
Patrick O'Malley  
Aprille Orear  
Stephen Oscarlece  
Matt Ouellette  
Victor Palatino  
Lynne Pampel  
Scott Parker  
Lonnie L. Patterson  
Brianna Peak  
Jay Pearce  
Stephen Perkins  
Bernard Persico  
David Petko  
Lorrayn Pickerell  
Nicholas Pinto  
Angela Piro  
Robert Ranieri  
Stacey Renner  
James Rhoda Jr.  
Ms. Kaitlyn Elizabeth Ribeiro  
Brian Riddell  
Howard Riggs  
James Robinson  
Lisa Robinson Kelly  
Charles Ropes III  
Barry and Rita Rothfeld  
Joseph Ruhl  
Michael Ruppert  
Kimberly R. Ryan R.A.  
C. Timothy Ryan  
Harbans Sachdev  
Jill Sammon  
Byron Sanchong  
Lauren Schifini  
Jacklyn Schultz  
Stephannie Shad  
Cathy Shanks  
Roxanne Shepley  
Leonard Shustack  
Steven Siematkowski  
John Silvers  
Matthew Slifstein  
Maureen Sorbo and Mark Logan  
Chrystal South  
David Speranza

Karen Staples  
Sheila Stuewer  
Amanda Sucato  
Rachel Sullivan  
Nicole Tancredi  
Cathi Tegtmeier  
Christopher Thomas  
Trish Tompkins  
Donald Trabucco  
Harold Turner III  
Erica Tyler  
Clifton Tynes  
Eric Updike  
Christopher Valdez  
Frank Valdina III  
Erick Valenzuela  
Raymond VanVoorhis  
Kenneth Vargas  
Jonathan Warren Jr.  
Nicholas Watkins  
Ronald Watkins Jr.  
Margaret Waz  
Erin Weddell  
Victoria Wheeler  
Robert Williams  
Shadei Williams  
John and Laura Williams  
Steven Wilson  
Emily Wood  
Theresa Young  
Kristine Young  
Devin Young  
Greg Yozzo  
Thomas Zupan  
33 anonymous donors

## SPECIAL THANKS TO THE LEADERSHIP SOCIETY

The Tocqueville Society and Leadership Society recognize local philanthropic leaders who devote themselves to creating lasting change by tackling our communities' most serious issues.

The Leadership Society is made up of about 200 members who donate \$1,000 or more annually to United Way of the Dutchess-Orange Region. Members represent a multitude of industries and organizations.

The prestigious Tocqueville Society membership is granted to individuals who contribute at least \$10,000 annually to United Way of the Dutchess-Orange Region. Alexis de Tocqueville admired three elements in American society: liberty, equality and the spirit of neighbor helping neighbor. Tocqueville Society members have helped to build a strong foundation that allows United Way of the Dutchess-Orange Region to pivot in response to the evolving needs of our community.

Members of the Tocqueville and Leadership Society enjoy certain perks such as:

- Joining forces with others who are providing the impetus for social change in poverty, hunger, education and other crucial impact areas.
- Associating with other top business and community leaders of the Hudson Valley
- Invitations to special networking and social opportunities
- Certificate of membership to display
- VIP tours and site visits of funded partners
- Recognition at events

Interested in learning more and making a larger impact? Contact Michelle Nepton at [mnepton@uwdor.org](mailto:mnepton@uwdor.org) or 845-471-1900 ext 3115. There are many giving options including monthly installments to make becoming a member even more accessible.

## Gifts in Memory Of . . .

Kimberly Ann Abrams  
Patrice Abruzzo  
Janet and George Alexander  
All Lives Lost to COVID  
Helen Andros  
Andy (from Peter Cutty)  
Anifatu's Father  
Theodore Arrington  
Irving F. Bailey  
Abe Banner  
Louis and Ann Barish  
Catherine Battistoni  
Gerald C. Becker  
Anna Bernard  
Annette Bittner  
Victor C. Blair, Jr.  
Richard and Mary W. Booth, Sr.  
David Broderick  
Louis M. Brosang  
Carmine Bruno  
Tony Buccelli  
Dick Buckey  
Barbara Eilert Cefaratti  
Jignesh Chauhan  
Chloe and Cody  
Cotton Family  
Blakely Elizabeth Cowart  
Al and David Creeden  
Stanley and Mae Dahowski  
Irma Schwinger DeAngele  
Rodrigo Del Castillo  
Jerry and Shirley Delaney  
Dennis (from Sandra Kane)  
Andrew Dillon  
William, Mary, Bill and David Dobbs  
Elizabeth Ann Dorsey  
Miriam Driscoll  
Helen Dunham  
Jean Cox Durkin  
Violet Edwards  
Eileen from The Lunch Bunch  
Marion & Ray Elden  
Bob and Van Farrier

Harry W. Fennell  
Mark Ferrari  
Betty Folster  
For Loved Ones from John and  
Laura Williams  
For Loved Ones from Rudolph and  
Sina Macak  
For Loved Ones from Victor and  
Ellen Stern  
Gail and Barbara  
Galucci Family  
Jack and Ellie Garrow  
Bob and Lorraine Goewey  
Bernard Goodman  
Joseph and Lillian Granda  
Pamela Green  
Lorlei Greenberg  
Stanley Hamm  
Raymond Hawk  
Walter & Joyce Hermann  
Kurt Herrmann  
Tom and Helen Heupler  
Jayce Hibbs  
Erin Higgins  
F. Philip and Mary Hoag  
John W. Humphreys  
Idema Family  
Charles R. Johnson  
Stephen Kasman  
Fred and Peg Kilmer  
The Kistner Girls  
Morris and Sophie Krakower  
Carolyn Kuhn  
Mark LaPerche  
Adam Lee  
Howard Leroy  
Vince Libretti  
Annie Luty  
Madson Family  
Lynne Malone  
Fran and Tony Mankus  
Ranieri Marchi  
Alma Martinez  
Michael Mathis

Anne McClelland's Dad  
Brian McGrath  
Peter James McKenna, III  
Margaret Millard  
Louis Miller  
Mimi  
John R. Mort  
MTA Workers  
Brian Daniel Murphy  
Nirmala Obulapuram  
Jean Palmisano  
Robert Terralavoro  
Elizabeth Tritschler  
Julia Marcus  
Mary Crowe  
Vincent F. Mullen  
John Murnin  
Brian Daniel Murphy  
Butch, Doc, Gerry, Jimmy, Juggie Nelson  
Dominic Palmeri  
Papou from Judith Pagones  
My Parents from L. Eugene Breglia, Jr.  
Lucille P. Pattison  
Carolyn Pecorella  
Helen Pfeiffer  
Maria Pinto  
Edward and Alma Poplawski  
Charles and Mary Potenza  
Elizabeth Jennings Prevelige  
Helen Reid  
Joseph Resta  
John C. Ritchie  
Melissa Ritchie  
Ken and Dot Robertson  
Herbert Roger  
Elodi L. Ross  
Linda M. Roy  
Donald R. Scofield  
Richard Shain  
Thomas Short  
James R. Smith  
John Spadaro  
Regina Spruck

## Gifts in Memory Of . . .

Charlotte Stearns  
Hank and Joyce Taylor  
Joey Trapani  
Alden Traver  
Helen and Joseph Urbanak  
Sandra T. Vana  
Venkatesh S.V.  
Jennie Wells  
Edith E. Taylor Wilk  
Trueman Witherwax  
Harry and Madeline Wolven  
Baby Wyman

## Gifts in Honor Of ...

First Responders  
Frontline Workers  
God's Helping Hands Food Pantry  
Local Teachers  
Nancy Longenberger  
David McNary  
Medical Workers during Covid 19  
Richard & Ann Seitzer

## COVID-19 Fund Corporate Supporters

Bank of America Charitable Foundation  
Chevron Matching Gift  
CVS Health and its Foundations  
Dyson Foundation  
TD Charitable Foundation  
J&JB Associates, Inc., dba Sierra Lily  
KeyBank in partnership with First Niagra Foundation  
Marshall & Sterling Inc.  
Marshall & Sterling Employee Match  
MVP Health Care  
Orange & Rockland Utilities  
Ulster Savings Bank  
United Way Worldwide  
UPS Foundation  
Wells Fargo

## Gifts from Foundations, Funds and Trusts

AmerisourceBergen Foundation  
Ann and Abe Effron Donor Advised Fund of the Community Foundations  
of the Hudson Valley  
Aronzon Family Charitable Fund  
AXA Advisors  
Bank of America  
Bill and Candy Davies Family Fund  
Cavanaugh Plum Family Fund  
Chevron Texaco  
Corporation for National and Community Service  
Dormitory Authority of the State of New York (DASNY)  
Dyson Foundation  
Emergency Food and Shelter National Board Program  
Evelyn and John Morrison Charitable Fund at SUNY Orange  
HERoes in Deed, Inc.  
IBM  
Key Bank  
Kohls Corporate Headquarters  
Lazarony Giving Fund  
Louis Greenspan Charitable Foundation  
Menaul Crut Trust  
MVP Health Care  
New York Empire State Poverty Reduction Initiative  
New York State Department of Health  
New York State Office of Children and Family Services  
TA Stern Foundation  
TD Bank  
Textron Charitable Trust  
Ulster Savings Charitable Foundation  
United Way of New York State  
United Way Worldwide  
UPS Foundation, Inc.  
Wells Fargo  
2 anonymous foundations

## Thanks to our Annual Corporate Sponsors

Adams Fairacre Farms  
Marshall & Sterling Inc.  
Orange Bank & Trust Company



# Thanks to our Community Breakfast 2019 Corporate Sponsors

United Way of the Dutchess-Orange Region's Fall 2019 Community Breakfast honored community leaders, Dr. Kristine Young, President of SUNY Orange and Dr. Pamela Edington, President of Dutchess Community College. We thank you for your support of this event that benefits the work of United Way of the Dutchess-Orange Region.

## Silver Sponsors

Adams Fairacre Farms  
Cornerstone Family Healthcare  
Dutchess Community College  
Dutchess Community College Foundation  
IBM Corporation  
Orange Bank & Trust Company  
Th!nk Dutchess

## Bronze Sponsors

Arthur DeDominicis Certified Public Accountants and Consultants  
Central Hudson Gas & Electric Corp.  
Crown Maple  
Hudson Valley Credit Union  
Lakeland Bank  
Legal Services of the Hudson Valley  
Mackey Butts & Wise LLP  
Marshall & Sterling Inc.  
Merrill Lynch  
Petro Home Services  
Prager Metis CPAs  
RBT CPAs, LLP  
SUNY Orange  
TD Bank  
Vassar College  
Wells Fargo

## Business Supporters

The Art Effect  
Bruderhof Community at Foxhill  
Children's Home of Poughkeepsie  
Corbally, Gartland & Rappleyea  
Day Seckler  
DSL Financial Services  
Herb Redl Properties/Guardian Self  
Storage  
McCabe & Mack LLP

Mid-Hudson Region of Northwestern Mutual  
Minuteman Press of Hyde Park  
Mobile Life Support  
Mutual of America  
PKF O'Connor Davies Accountants and Advisors  
Rose & Kiernan, Inc.  
TEG Federal Credit Union  
Tompkins Mahopac Bank

## Media Sponsors

The Poughkeepsie Journal / Localiq  
Q92 / iHeart Radio

# Thanks to our Celebration of Service 2020 Corporate Sponsors

United Way of the Dutchess-Orange Region's Spring 2020 Celebration of Service, our first virtual event, saluted our partners who worked tirelessly during the pandemic and our top campaigns.

## **Silver Sponsors**

Adams Fairacre Farms

RBT CPAs LLP

## **Bronze Sponsors**

M & O Sanitation, Inc.

Marshall & Sterling Inc.

Orange Bank & Trust Company

Poughkeepsie Galleria

Prager Metis CPAs

Precision Pipeline Solutions

Rose & Kiernan Inc.

## **Business Supporters**

Arthur DeDominicus Certified Public Accountants & Consultants

Bruderhof Communities at Fox Hill

Central Hudson Gas & Electric Corp.

The Chazen Companies

Connor & Associates

Day Seckler

DSL Financial Services

Harney & Sons

Hudson Valley Credit Union

Lakeland Bank

Merrill Lynch

Mount Saint Mary College

Orange Regional Medical Center

Vassar College

## **Media Sponsors**

The Poughkeepsie Journal / Localiq

Q92 / iHeart Radio

# ASSETS AS OF JUNE 30, 2020

Current Assets	
Cash and cash equivalents	\$ 1,553,456
Pooled endowment investments	2,129,480
Pledges receivable (net)	520,556
Grants receivable	145,723
Other assets	76,534
Property and equipment, net of depreciation	337,278
<hr/>	
Total Assets	\$ 4,763,027
<hr/>	

# LIABILITIES AS OF JUNE 30, 2020

Current Liabilities	
Accounts payable and accrued expenses	\$ 141,747
Grants payable and other liabilities	14,595
Donor designations payable	101,358
Deferred Income	113,153
Long Term Liabilities	0
<hr/>	
Total Liabilities	\$ 370,853
<hr/>	
Net Assets	
Without Donor Restrictsion	\$ 3,087,638
With Donor Restrictions	1,304,536
<hr/>	
Total Net Assets	\$ 4,392,174
<hr/>	
Total Liabilities and Net Assets	\$ 4,763,027
<hr/>	

# EXPENSES JULY 1, 2019 - JUNE 30, 2020

Program Expenses:	\$ 2,462,651
Fundraising Expenses:	\$ 319,635
Admin Expenses:	\$ 196,723
<hr/>	
Total Expenses	\$ 2,979,009

# OUR ACCOUNTABILITY STATEMENT

We have a responsibility to you, our donors, and to the entire community, to ensure that the dollars you entrust to us are invested in ways that produce the greatest measurable impact on lives, enabling our region to thrive. Our investment strategy unites a network of more than 34 partner organizations and 43 programs under a set of shared goals. Our funding is tied to the achievement of specific measurements, increasing our likelihood of driving substantial change in our region.

# GIVE. ADVOCATE. VOLUNTEER. LIVE UNITED



## **There are many ways you can make a Difference!**

*While supporters can make a traditional gift through payroll, check or credit card, there are many giving options that help make our work possible.*

### **Though your Donor Advised Fund**

You can make a gift from your Donor Advised Fund by requesting that a grant be made from your fund to United Way.

### **Real Estate**

Turn an asset such as a home, building or land into a charitable gift and receive certain tax benefits.

### **Stocks, Bonds and Mutual Funds**

Make a gift of securities directly to United Way. Please contact Sue Manning at 845-471-1900 ext 3121 for instructions. Gifts of appreciated stocks, bonds and mutual funds may help you avoid capital gains tax on the appreciated portion of the gift.

### **Give a Tax Free Gift**

Transfer money tax-free directly from your IRA if you're 70½ years old or older.

### **Honor a Loved One**

Recognize a special friend or family members by making a gift in their honor or memory.

### **Leave a Legacy**

Leave a legacy with a gift in your will or estate plans. There are naming opportunities throughout our building.

If you have included our United Way in your estate plans, please let us know. We would like to thank you for your generosity, make sure the purpose of your gift is understood by our staff, and recognize you as a member of our Legacy Society. Contact Jeannie Montano at [jmontano@uwdor.org](mailto:jmontano@uwdor.org) or 845-471-1900 ext 3101.

## BOARD OF DIRECTORS 2019-2020

### EXECUTIVE BOARD

**Kevin Cleary, Chair**

*Retired, IBM Corporation*

**Amy Berger, Vice-Chair**

*Retired, IBM Corporation*

**Mike Mazzuca, Secretary**

*Wallkill Valley Federal Savings & Loan*

**Susan L. Howell, Treasurer**

*RBT CPAs, LLP*

### BOARD MEMBERS

**Fred Clarke, Esq**

*Law Offices of Fred Clarke*

**Arthur DeDominicis\***

*Certified Public Accountant & Consultants*

**Philip S. Derasmo**

*TD Bank*

**Tim J. Eisentraut**

*UPS*

**Melissa Gaeke, Ph.D.**

*Marist College*

**Maureen Halahan\***

*Orange County Partnership*

**Julie Kammerer**

*CareMount Medical*

**Philip G. Lekanides**

*Rhinebeck Bank*

**Richard Mayfield**

*United States Department of Agriculture*

**Sharon McGinnis**

*Central Hudson Gas & Electric Corp.*

**Timothy M. Murphy**

*Orange County Government*

**John Nardi**

*Orange Bank & Trust Company*

**Michelle O'Reilly, CPA**

*PKF O'Connor Davies, LLP*

**Matthew Ian Paquet**

*Abilities First/Dutchess Community College*

**Barry Rothfeld\***

*Focus Media*

**Scott R. Sweeney, CLCS**

*Marshall & Sterling Inc.*

**Brian M. Waldron**

*Hudson Valley Credit Union*

\*Advisory Board Members

75 Market Street  
Poughkeepsie, NY 12601  
Tel: 845-471-1900  
Fax: 845-471-1933



[www.UWDOR.org](http://www.UWDOR.org)



United Way of the  
Dutchess-Orange Region